



# Sherwood Park

est. 1926

President - Donna Hughes  
Vice President - Bobbie Hunt  
Secretary - Denise Nelson  
Treasurer - Lee Ann Jones


### Committees

Communications - Yvette Conte  
Gov't. Affairs and Safety - John Gass  
Beautification - Jim Brodeur  
Hospitality - Bobbie Hunt and Katherine Mayo

Please send us a message if you would like to be on the email list and/or become involved with the Sherwood Park Civic Association.

Website: [rvasherwoodpark.org](http://rvasherwoodpark.org)

 [rvasherwoodpark@gmail.com](mailto:rvasherwoodpark@gmail.com)

 [sherwoodparkva](https://www.instagram.com/sherwoodparkva)

 Sherwood Park Civic Association

## UPCOMING EVENTS

(as of printing time)

### WEDNESDAY, JUNE 17

Code Refresh Draft 2 Summary  
Zoning Advisory Council Mtg. 4:00pm  
City Hall, 5th Floor

3rd District Meeting 6:00pm  
Councilmember Kenya Gibson  
Holton Elementary School

### MONDAY, JUNE 22

City Council Meeting 6:00pm  
Council Chamber, 2nd Floor City Hall

### WEDNESDAY, JUNE 24

SPCA General Meeting 7:00pm  
Early Center  
1106 Westwood Avenue

# NEWSLETTER • SUMMER 2026

## General Meeting - Wednesday 6/24

The next Sherwood Park Civic Association general meeting is scheduled for **Wednesday, June 24 at 7:00pm at Union Presbyterian Seminary Early Center at 1106 Westwood Avenue**. The agenda includes speakers from Yaupon Place/Union Presbyterian Seminary, Shalom Farms, Richmond's Office of Sustainability, and Richmond's Office of Urban Forestry. We will also have updates on current and upcoming events. All Sherwood Park residents are welcome and encouraged to attend!

## BLOCK CAPTAIN MEETING

Block Captains will meet at 6:30, right before the general meeting, to review progress on connecting with neighbors.



## HOSPITALITY COMMITTEE NEWS

Our Spring Fling was a wonderful success, and we're so grateful to Brooke and Zach Isbell for hosting. We're looking forward to more time together at the July 4th Picnic and our 100th Anniversary Celebration on September 19th—details will be shared on the website soon. We're also putting together a neighborhood video, so if you have photos or would like to share your Sherwood Park story, please reach out to [membership@rvasherwoodpark.org](mailto:membership@rvasherwoodpark.org).

## BREAK-IN ON SUFFOLK ROAD

On Monday, June 8 there was a burglary at a residence on Suffolk Road. A man, who was captured on the homeowner's video camera, entered the house around 4:00am while the owners were home sleeping, and stole cash, credit cards, sunglasses and a safe. This is being investigated by the Richmond Police Department. Keep your doors locked and stay safe, everyone!

## TECHNOLOGY COMMITTEE REPORT

Coming soon: MembershipWorks, a members-only site and directory that will also make it easier to pay dues online. If you've already paid your 2026 dues, please watch for an email from [membership@rvasherwoodpark.org](mailto:membership@rvasherwoodpark.org) in the coming weeks with instructions for logging in and setting up your account.

**OPEN TODAY 3-5 P. M.**  
**BEAUTIFUL SHERWOOD PARK**  
**1310 WHITBY ROAD**

A handsome Colonial brick home situated on a high elevated corner lot. It has the much desired center hall plan. First floor consists of living room 22' long, large dining room and den with fireplace and picture window. Beautiful, modern Geneva kitchen and powder room. Second floor has 3 beautiful bedrooms, loads of closets and 2 nice baths. Stairs to large attic which is floored and insulated. Full basement, half of which is recreation room. Entire house in immaculate condition. \$24,500.

**MORTON G. THALHIMER**  
*Realtors*

**MRS. HOLLABAY**  
 Office, 2-5881 Home, 4-4527  
 DIRECTIONS: First block north of Brookland Parkway, turning south on corner of Robin and Whitby.

From the Richmond Times-Dispatch January 1953

## GOVT. AFFAIRS/SAFETY COMMITTEE REPORT

Laura Stephens

Richmond Waldorf School wants to purchase the area of the slip lane and the small triangle of land in front of the school located at 1301 Robin Hood Road. This section has been closed for the past 4 years to vehicular traffic. If this closure is permanent Richmond Waldorf School is proposing to construct a parking lot to serve the school with onsite parking, landscaping, and sidewalks. In addition to providing additional school parking, the proposal would improve traffic circulation and safety during mornings and afternoons when students are being dropped off and picked up. The school shall also provide new public sidewalks along Robin Hood Rd. and Brookland Parkway.

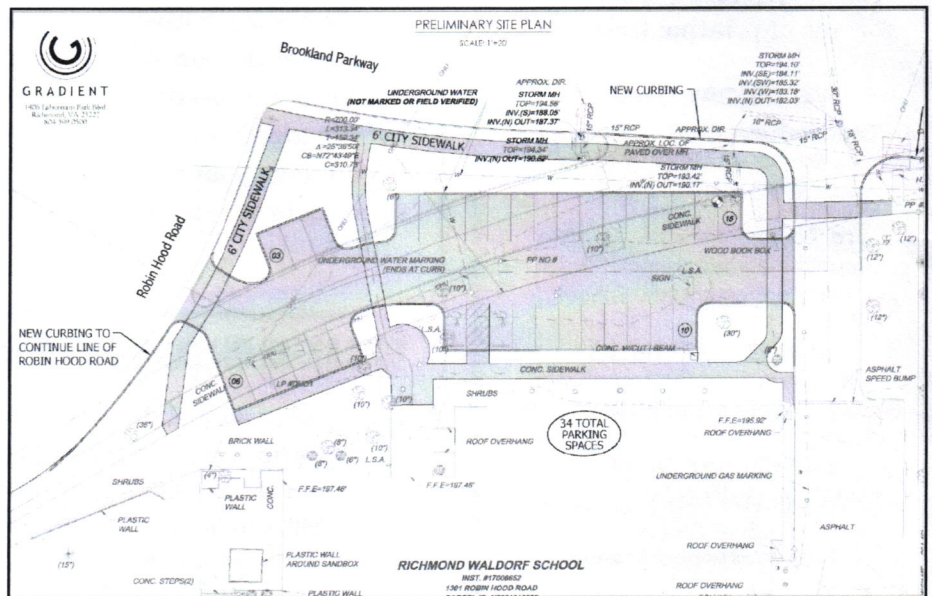
Information about the school's plans was presented at the Sherwood Park Civic Assoc. (SPCA) General Meeting in April 2025 and the SPCA held a straw vote to support the project at that meeting. Subsequently, in May 2025 a letter of support was written to the school which reads, in part, "Thank you for presenting the proposal to our general neighborhood meeting of April 29. You gave a thorough presentation of the school's mission and future, highlighting how the capture of the triangle would enhance the school campus and create a safer environment for the school and traffic on the surrounding streets. The Q&A portion further discussed these issues and concluded with a near-unanimous show-of-hands vote by the neighbors for The Waldorf School proposal team, an indication that, for those neighbors attending, there was clear approval of the notice as presented."

When we held our April 2026 SPCA General meeting at the school, the Executive Director thanked us for our support for their plans. It was only then that many members of the Government Affairs and Safety Committee first heard anything of their plans. The SPCA had not shared the presentation, the letter of support, or mentioned the plans in the year intervening the two meetings.

In May 2026, when residents learned the details of the plan through the public notice sent to adjoining landowners, concerns were raised about the process of selling the land at the same time as reviewing the parking lot proposal, pedestrian and bike safety, conflict with Richmond 300, green space, and the Olmsted design.

Ordinance NO 2026-109 will be on the City Council Consent agenda on June 22nd. This meeting will provide the community an opportunity to see the conceptual plan for this location should this ordinance pass. It is important to know how this can impact this area of Sherwood Park.

Now it is time to take a closer look and ensure our community understands the potential impact. If the ordinance is supported, The Waldorf School will continue to collaborate with Sherwood Park on the details of the final design, to make it complimentary to our community while still meeting their goals. If it is not supported, The Waldorf School may abandon the significant investment of time and resources and decide what the future course should be.



Visit [rvasherwoodpark.org](http://rvasherwoodpark.org) for more information.